

Service
Service
Service



Philips Domestic Appliances and Personal Care

Service Manual

PRODUCT INFORMATION

General:

- Mains/rechargeable operation
- World-wide automatic voltage selection
- Electronic on/off switch
- Washable

Safety information

- This product meets the requirements regarding interference suppression on radio and TV.
- After the product has been repaired, it should function properly and has to meet the safety requirements as officially laid down at this moment.

TECHNICAL INFORMATION

- Voltage : 100 - 240 Volt / 50 - 60 Hz
- Motor voltage : 1,2 Volt
- Shaving heads : HQ8 - 4222 036 05820
- SAP coding : 7180XL

DISASSEMBLY- AND RE-ASSEMBLY ADVICE

Disassembly:

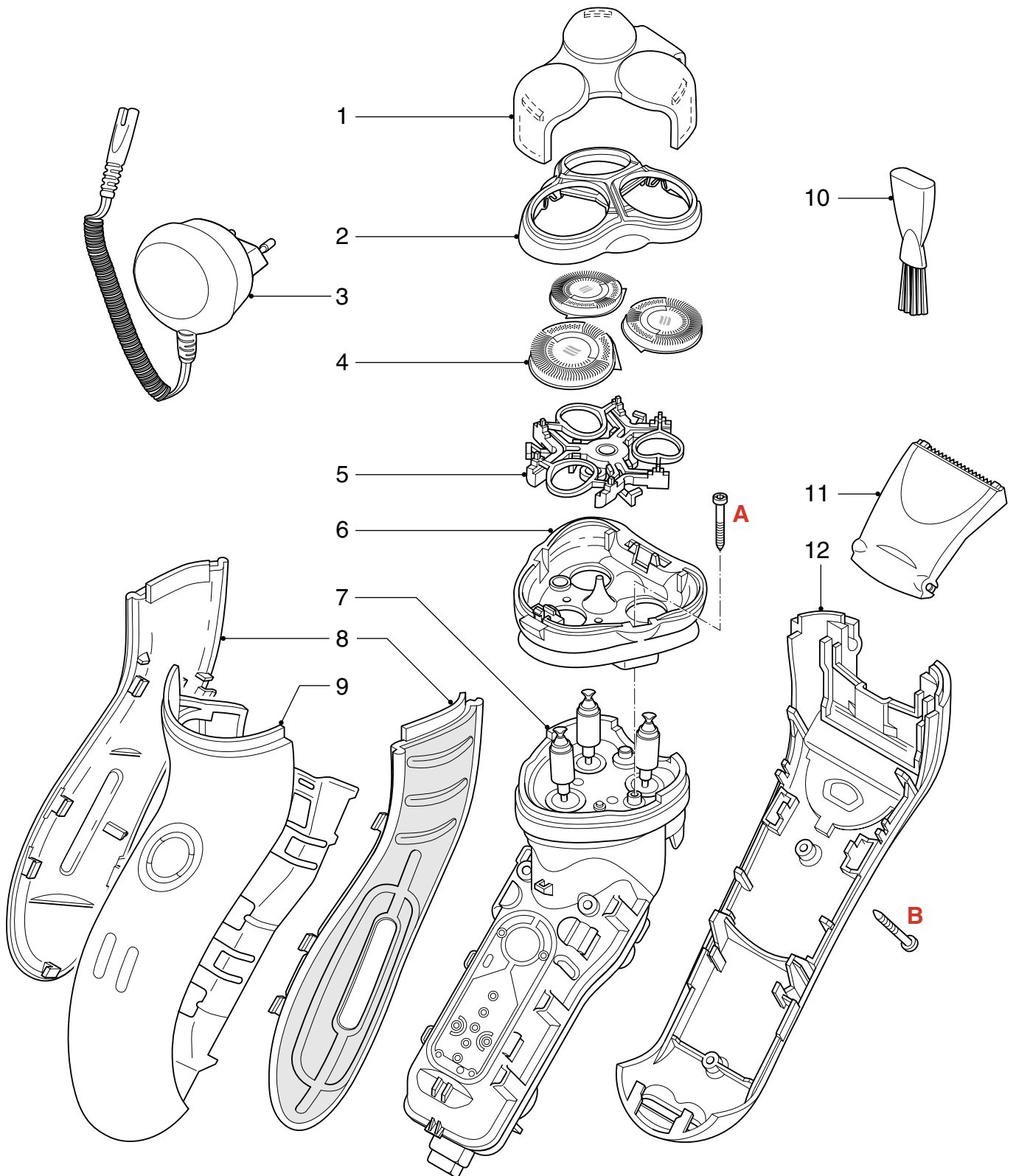
- Remove shaving unit, to prevent damaging during repairing.
- Remove the 2 screws (A) out of the hairchamber.
- Remove the hairchamber from the body.
- Remove the 2 screws (B) on the backside of the shaver.
- Remove the cover.
- Remove the side grips.
- Remove the housing by bending the hooks with a screwdriver.
- Take out the basic body.

REPAIR INSTRUCTION

- No specific issues

OPTIONAL (accessories)

- Car cord : 4222 036 08920



Pos	Service code	Description	
1	4222 036 12600	Protection cap	Cheetah
2	4222 036 12610	Bracket-assy	
3	4222 036 06810	Power plug	NOR
	4222 036 05110	Power plug	Can/Tw/Ven
4	4222 036 05820	Shaving heads	
5	4222 036 11220	Holder-assy	
6	4222 036 12640	Hairchamber	

Pos	Service code	Description	
7	4222 036 12810	Basic body	
8	4222 036 12570	Grip left & right	
9	4222 036 12560	Housing-assy	
10	4222 036 02770	Brush	
11	4222 036 12220	Trimmer assy	
12	4222 036 12740	Back shell assy	
	4222 036 11480	Screw	