

PHILIPS
NORELCO

NIVEA
FOR MEN



**Rechargeable
Cordless Tripleheader Razor**

8060X

Register your product and get support at
www.philips.com/norelco

ENGLISH 4

Congratulations on your purchase and
welcome to Philips Norelco!

To fully benefit from the support that Philips
Norelco offers, register your product at
www.philips.com/norelco

8060X

IMPORTANT SAFETY INSTRUCTIONS

When using an electric razor, basic safety precautions should always be followed, including the following:

Read all instructions before using this appliance.

DANGER

To reduce the risk of electric shock:

1. Do not reach for a charging stand that has fallen into water. Unplug immediately.
2. Charging stand is not for immersion or for use in shower.
3. Do not place or store a charging stand where it can fall or be pulled into a tub or sink. Do not place charging stand in or drop into water or other liquid.
4. Do not use an extension cord with this appliance.
5. Always unplug charging stand from the electrical outlet immediately after using, except when razor is (re)charging.
6. Unplug charging stand before cleaning.

WARNING

To reduce the risk of burns, fire, electric shock, or injury to persons:

1. Close supervision is necessary when this razor is used by, on, or near children or invalids.
2. Use this razor for its intended household use as described in this manual. Do not use attachments not recommended by Philips Electronics North America Corporation.
3. Never operate this razor if it has a damaged cord or plug, if it is not working properly, if it has been dropped or damaged, or dropped into water. For assistance call 1-800-243-3050.

4. Keep the razor and cord away from heated surfaces.
5. Never drop or insert any object into any opening.
6. Do not charge razor or plug in charging stand outdoors or operate where aerosol (spray) products are being used or where oxygen is being administered.
7. Do not use this razor with a damaged or broken comb, as facial injury may occur.
8. Always place razor in stand first, then plug stand into outlet. To disconnect, remove plug from stand from outlet.
9. To prevent possible damage to the cord, do not wrap cord around the charging stand.
10. Never put razor in direct sunlight or store in a pouch at a temperature above 140°F.
11. Razor is water-safe and can be rinsed under running tap water or used in shower. Do not submerge razor in water.

SAVE THESE INSTRUCTIONS

IMPORTANT: The power plug contains a transformer. Do not cut off the power plug to replace it with another plug, as this will cause a hazardous condition.

CAUTION: Keep shaving conditioner out of reach of children. Do not take internally. Avoid contact with eyes. In case of eye contact, thoroughly flush with cold water. If irritation persists, get medical attention.

PHILIPS



45 - DAY MONEY-BACK GUARANTEE

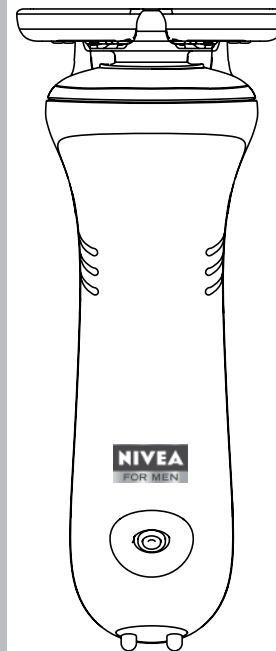
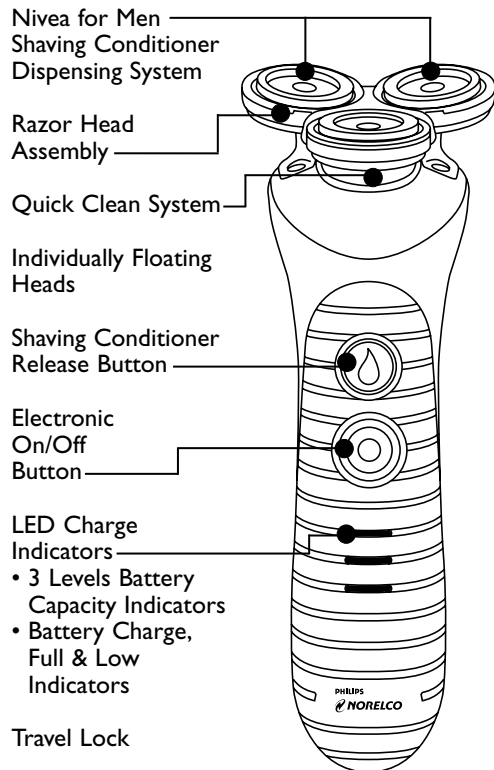
To enjoy the closest and most comfortable shave from your new Philips Norelco Men's Razor, the razor should be used exclusively for 3 weeks. This allows your hair and skin enough time to adapt to the Philips Norelco Shaving System. If, after that period of time, you are not fully satisfied with your Philips Norelco Men's Razor, send the product back along with dated sales receipt and we'll refund you the full purchase price. **The razor must be shipped prepaid by insured mail, insurance prepaid, and have the original sales receipt, indicating purchase price and the date of purchase, enclosed. We cannot be responsible for lost mail.** The razor must be postmarked no later than 45 days from the date of purchase. Philips Norelco reserves the right to verify the purchase price of the razor and limit refunds not to exceed suggested retail price.

To obtain money-back guarantee return authorization form, call 1-800-243-3050 for assistance.

Table of Contents

Features.....	8-11
Important.....	12
Introduction	12
Before First Use.....	12-13
Preparing Refill & Charge Stand for Use.....	13-14
Charging Indications.....	15-17
Charging & Filling Razor.....	17-19
Recharging	19
Quick Charge	20
Put It To The Test & Shaving Tips.....	20
How to Shave With Razor.....	21-23
Trimming	23-25
Travel Lock	25-27
Cleaning.....	27-32
Replacing Cartridges & Shaving Conditioner Refill Bottle	32-34
Replacing Razor Head Assembly	34
Maintenance	35
Storage.....	35-36
Assistance	36
Accessories	36
Warranty.....	37

Features



Click-On Trimmer Attachment for beard, moustache and sideburns

Automatic Worldwide Voltage 100V to 240V AC

Travel/Storage Pouch

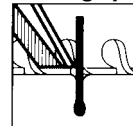
Rechargeable Cordless-90 minutes full charge for up to 40 minutes of cordless shave time

Quick Charge

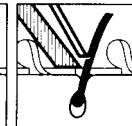
Full 2-Year Warranty

45-Day Money-Back Guarantee

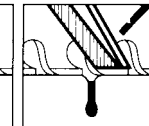
How the Unique Philips Norelco  Lift and Cut Shaving System Makes Close Comfortable:



Groove channels beard closer to cutting system

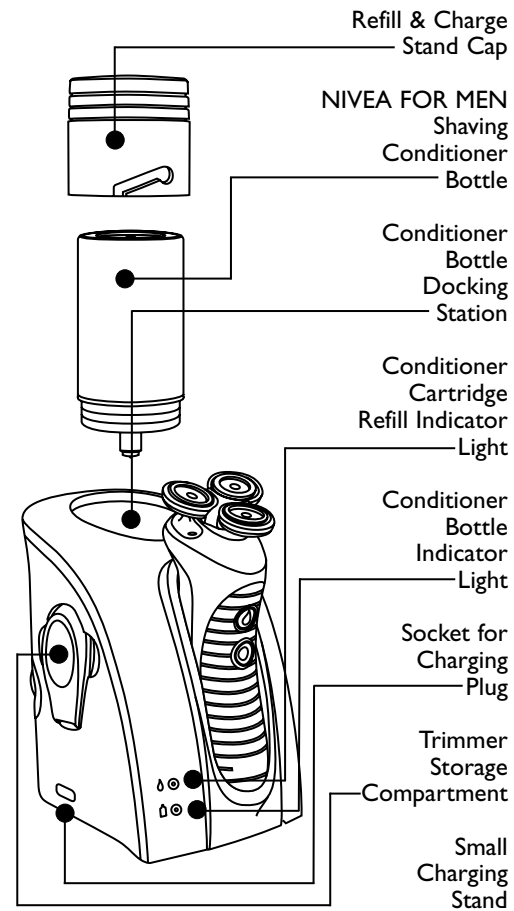


Lifter raises hair



Blade cuts hair which then drops below skin level

Features



Important

- ▶ Only use the power plug and the refill & charge stand provided to charge the razor.
- ▶ The power plug transforms 100-240 AC volts to less than 24V DC.
- ▶ An adaptor plug may be necessary for cord usage in some foreign countries. Your new razor will automatically convert internally to work on 100V to 240V AC systems.

Introduction

The NIVEA FOR MEN conditioner dispensing system applies shaving conditioner directly on your skin for a moisturizing and soothing shave. The formula is enriched with vitamins and chamomile to condition your skin for a healthy look.

The Glide Rings on the shaving heads distribute the unique NIVEA FOR MEN shaving conditioner evenly over the skin, offering an even smoother and closer shave, causing less skin irritation and leaving your skin feeling refreshed.

Before First Use

- ▶ Charge and fill the razor before you start using it (see 'Charging & Filling Razor').

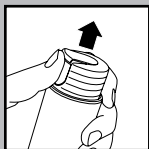
Travel Lock

The razor is equipped with a travel lock function. You can use the travel lock function when you are going to store the razor for a longer period or if you are going to take the razor with you when travelling. See "Travel Lock" section for instructions on how to use this function.

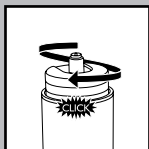
Preparing Refill & Charge Stand for Use

Important

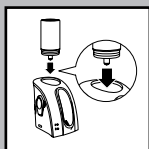
- ▶ Only use this razor, power plug, refill & charge stand or small charging stand and HS800 NIVEA FOR MEN shaving conditioner to refill or charge razor.
- ▶ Only use this Philips Norelco razor with the refill & charge stand.
- ▶ Other Philips Norelco model razors **DO NOT** work with a refill & charge stand.
- ▶ For hygienic reasons, replace the shaving conditioner cartridge each time you start using a new bottle of NIVEA FOR MEN shaving conditioner. A new cartridge is supplied with each new shaving conditioner bottle.
- ▶ Use this appliance for its intended household use as described in this manual.



1 Place the refill & charge stand on a flat, level surface.

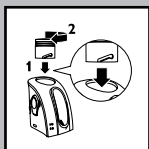


2 Remove the tab of the NIVEA FOR MEN shaving conditioner bottle.



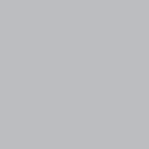
3 Turn the cap on the shaving conditioner bottle clockwise.

The cap moves down and the shaving conditioner nozzle appears.

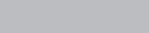


4 Turn the cap of the refill & charge stand counterclockwise to remove cap.

For first time use, remove and discard the packing in the shaving conditioner bottle docking hole in the refill & charge stand.



5 Place the shaving conditioner bottle in the docking hole of the refill & charge stand with the nozzle pointing down.



6 Replace the cap on the top of bottle docking station (1) and turn clockwise to secure the cap (2).

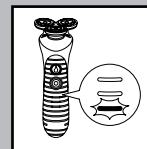
7 The refill & charge stand is now ready for use.

NOTE: ONLY USE NIVEA FOR MEN SHAVING CONDITIONER, MODEL HS800, WITH THE REFILL & CHARGE STAND. ANY OTHER LOTION MAY CAUSE DAMAGE TO YOUR RAZOR AND/OR CHARGE STAND.

Charging Indications

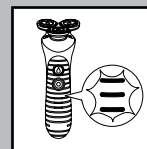
Razor Charge Indications

Low Battery Indicator



- ▷ When the battery is running low, the bottom light burns red during shaving.
- ▷ If you switch the razor off when the battery is low, the bottom light blinks red.

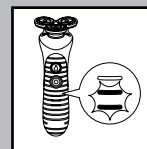
Full Battery Indicator



- ▷ If you start charging the battery when it is running low, the bottom light first blinks red, then blinks green and finally burns green continuously.
- ▷ After the bottom light burns green continuously during charging, the remaining lights will first blink green and then burn green continuously one after the other.
- ▷ The three battery lights will burn green continuously when the battery is fully charged.

Battery Indications During Shaving

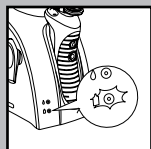
The three battery lights show the remaining battery capacity for a few seconds after you switch the razor on or off.



- ▷ The lower two battery lights burn green when 66% of the entire battery capacity is left.
- ▷ The bottom battery light burns green when 33% of the battery capacity is left.

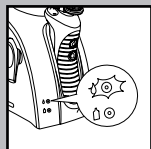
- ▶ The bottom battery light burns red during shaving when the battery is almost completely empty and blinks red when you turn off the razor (see also section 'Low Battery Indicator')

Refill & Charge Stand Indications



Shaving Conditioner Bottle Indicator Light

- ▶ The shaving conditioner bottle light will blink red when the shaving conditioner bottle is empty or if the bottle has not been placed in the docking hole of the refill & charge stand properly.
- ▶ The conditioner bottle light will blink red if there is no shaving conditioner bottle in the refill & charge stand docking hole.
- ▶ See 'Preparing Refill & Charge Stand for Use' section for complete instructions.



Shaving Conditioner Cartridge Indicator Light

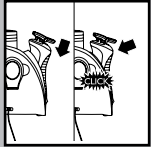
- ▶ When the shaving conditioner cartridge on razor is being filled, the shaving conditioner cartridge light will blink green.
- ▶ When the shaving conditioner cartridge is filled completely, the shaving conditioner cartridge light will burn green continuously.
- ▶ If the shaving conditioner bottle runs out while filling the shaving conditioner cartridge,

the green indicator light will turn OFF and the shaving conditioner bottle light will blink red.

Charging & Filling Razor

- ▶ Charging or recharging at temperatures below 40°F or higher than 95°F adversely affects lifetime of batteries.
- ▶ Do not leave the refill & charge stand with the razor in it continuously plugged into outlet. If storing razor in stand, remove the plug from outlet as soon as the razor is completely charged and the shaving conditioner cartridge is full.
- ▶ Do not charge razor in a pouch.
- ▶ Charging and recharging requires a full 90 minutes.
- ▶ A fully charged razor has a shaving time of up to 40 minutes.
- ▶ For hygienic reasons, it is advised that you use a new shaving conditioner cartridge on your razor when starting a new shaving conditioner refill bottle.

- 1** Connect the small plug into the refill & charge stand and put the power plug into any 100V to 240V AC outlet. Use only the cord and refill & charge stand provided.
- 2** Put NIVEA FOR MEN shaving conditioner bottle in docking hole of refill & charge stand (see 'Preparing Refill & Charge Stand For Use').



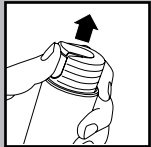
- 3** Place the razor in the refill & charge stand. Gently push razor back until it clicks into position. The razor will be charged and filled with shaving conditioner automatically.

The razor will be fully charged after 90 minutes.

- 4** Remove the power plug from outlet as soon as the battery is fully charged and the shaving cartridge is refilled with shaving conditioner. You may then store the razor in the refill & charge stand.

Manual Refilling of Razor Cartridge

- ▶ You may also refill the shaving conditioner cartridge manually.
- ▶ Only use NIVEA FOR MEN Shaving Conditioner to refill the shaving conditioner cartridge. Any other lotion may cause damage to your razor.

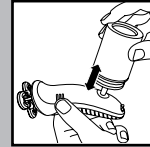


- 1** Remove the tab of the NIVEA FOR MEN Shaving Conditioner bottle (Model HS800).



- 2** Turn the cap on the shaving conditioner bottle clockwise.

The cap moves down and the shaving conditioner nozzle appears.



- 3** Place the nozzle of the conditioner bottle into the opening of the conditioner cartridge on the back of the razor.
- 4** Move the bottle up and down approximately 5 times to pump the shaving conditioner into the cartridge until you see that the shaving cartridge is full. Do not fill the cartridge beyond the MAX indication.

BE CAREFUL NOT TO OVERFILL SHAVING CARTRIDGE.

- 5** Remove nozzle of the shaving conditioner bottle from shaving conditioner cartridge and turn the cap counterclockwise until the nozzle is flush with the top of the cap. Replace the tab on top of the shaving conditioner bottle.

Recharging

- ▶ For your convenience, you may (re)charge your razor in the refill & charge stand or the small charging stand.

- 1** Recharging requires a full 90 minutes.
- 2** When razor is fully charged, disconnect the charging plug from outlet.

Do not keep refill & charge stand or smaller charging stand permanently plugged into outlet.

Quick Charge

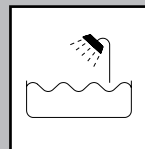
When batteries are totally depleted, recharging the razor for approximately 9 minutes gives enough energy for a 3-minute cordless shave.

NOTE: Quick charging is only possible when the razor has been fully charged at least once for 90 minutes.

Put It To The Test & Shaving Tips

- ▶ **21 Day Trial and Conversion Process.** It is a fact that your skin and beard need time to adjust to a new shaving system.
- ▶ **Use your new razor exclusively for 3 weeks** to fully enjoy the closeness of a Philips Norelco shave.
- ▶ **At first you may not get as close a shave as you expect, or your face may even become slightly irritated.** This is normal since your beard and skin will need time to adjust. Invest 3 weeks and you'll soon experience the full joy of your new razor.
- ▶ **Stick with it!** If you alternate shaving methods during the adjustment period, it may make it more difficult to adapt to the Philips Norelco shaving system.
- ▶ **If you are still not convinced after 21 days,** Philips Norelco will refund you the full purchase price as long as the request is received within 45 days of purchase.

How To Shave With Razor



- ▶ This symbol on the razor indicates that the razor can be used in the bath or shower.
- ▶ Make sure the power plug and refill & charge stand do not get wet or near water.
- ▶ Use this razor for its intended household use as described in this manual.



- 1** Make sure your razor is charged and filled with NIVEA FOR MEN shaving conditioner (see 'Charging & Filling Your Razor').
- 2** Remove Protective Razor Head Cap from razor by sliding it off from the Razor Head Assembly.

- 3** Wet your face and neck thoroughly with warm water.

NOTE: This razor can be used similar to a razor blade: you can use the razor on a wet face.

- 4** Turn the razor ON by pressing the on/off button once.

- ▶ If the razor does not turn on immediately, check to make sure the Travel Lock is not engaged.



- 5** Press the shaving conditioner button to apply NIVEA FOR MEN shaving conditioner to your skin. When you release the button, the razor stops dispensing lotion.

The shaving conditioner button only works when the razor is switched ON.

- ▶ If the razor does not dispense shaving conditioner, dried shaving conditioner may be blocking the conditioner holes. Thoroughly clean razor (see 'Cleaning' section).

- 6** Gently move the shaving heads over your skin. Shave against the direction of beard growth using both straight and circular motions.

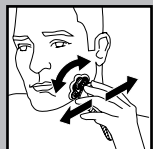
This razor has no hair collection chamber to capture stubble. To prevent stubble from falling, apply sufficient shaving conditioner while shaving.

- 7** While shaving, press the shaving conditioner button frequently to apply more NIVEA FOR MEN shaving conditioner so that the razor keeps gliding smoothly over your face.

The shaving conditioner provides immediate hydrating action and lessens drag or pull against skin.

- 8** Easy does it. Gently press the razor to your skin so the floating heads can follow the contours of your face. DO NOT press too hard. Too much pressure can pinch the skin into the combs.

- ▶ For the best shaving results, shaving conditioner should be applied frequently.



- ▶ Make sure shaving conditioner is always released from both holes in the Razor Head Assembly. If not, thoroughly clean razor (see 'Cleaning' section).
- ▶ The razor will not perform optimally when used without shaving conditioner on a wet face.

- 9** Turn the razor off by pressing the on/off button once.

- 10** Clean the razor after EACH use (see 'Cleaning' section).

- 11** Put the Protective Razor Head Cap on the razor when you store it to prevent the shaving heads from getting damaged. Replace Razor Head Assembly (model HS85) once a year for optimal shaving results.

- 12** You may store your razor in the refill & charge stand. Unplug from the outlet when refilling/charging is complete.

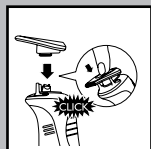


Trimming

To Groom Sideburns and Moustache:



- 1** Turn razor OFF.
- 2** Remove Razor Head Assembly from the razor by pulling the Razor Head Assembly straight up away from the razor.



- 3** Remove trimmer from the trimmer storage compartment on the refill & charge stand.
- 4** Fit the trimmer onto the razor (you will hear a click). The trimmer is now ready for use.
- 5** Activate trimmer by pressing the on/off button once.

Do Not Press Shaving Conditioner Button While Using Trimmer.

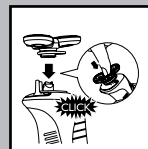
To Use Trimmer:



- 1** Turn razor ON.
- 2** Hold trimmer to exact hairline desired. Move trimmer downward with gentle pressure.
- 3** Trim beard, moustache or sideburns using the trimmer.
- 4** Turn razor OFF when finished.
- 5** Thoroughly clean the trimmer after using (see 'Cleaning').

To Remove Trimmer:

- 1** Turn razor OFF.

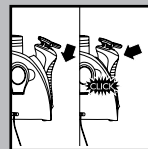


- 2** Take the trimmer off the razor by pulling straight up away from the razor. Place the trimmer back into the trimmer storage compartment on the refill & charge stand.



- 3** Replace Razor Head Assembly back on the razor and push down (you will hear a click).

The Razor Head Assembly will only fit correctly in one position on razor. Make sure to align the 2 shaving lotion dispensing holes on the Razor Head Assembly with the 2 shaving lotion tubes on the razor.



- 4** Put the Protective Razor Head Cap on the razor.

- 5** You may store your razor in the refill & charge stand. Unplug from the outlet when refilling & charging is complete.

Travel Lock

If you are going to store the razor for a longer time period or if you are going to travel, it is possible to lock the razor. The travel lock prevents the razor from being switched on by accident.

Activating the travel lock

- 1** Turn the razor OFF.
- 2** Press and hold the shaving conditioner button.
- 3** Press the on/off button with your other hand.
- 4** Hold both buttons for a few seconds until the razor makes a brief humming sound and the top charging light blinks a few times. The travel lock has now been activated.

▶ *If the on/off button is accidentally pressed first, the razor will turn ON. Press again to turn off razor.*

Deactivating the travel lock

- 1** Turn razor OFF.
- 2** Press and hold the shaving conditioner button.
- 3** Press the on/off button with your other hand.
- 4** Hold both buttons for a few seconds until the razor makes a brief humming sound

and the top charging light blinks a few times. The razor is now ready for use again.

- ▶ *The razor unlocks automatically when you place the razor in the refill & charge stand while plugged in.*

Checking if the razor is locked properly

- 1** Press the on/off button briefly (less than 3 seconds).
- 2** The charging light blinks green to confirm that the travel lock is active.

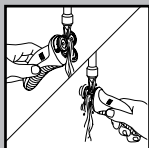
Cleaning

- ▶ Always clean your razor after each use.
- ▶ Regular cleaning guarantees better shaving results.
- ▶ Never remove or replace Razor Head Assembly while motor is on.
- ▶ Do not apply pressure to combs. Do not touch razor heads with hard objects as this may dent or damage precision-made slotted combs.
- ▶ Do not use razor if combs are damaged or broken. Facial injury may occur.
- ▶ Never dry the shaving unit with a towel or tissue as this may damage razor heads.
- ▶ Do not use abrasives, scourers or liquids such as acetone to clean the appliances.

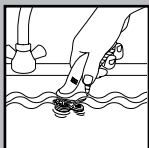
Razor Head Assembly: After Each Use

► It is recommended that you clean the Razor Head Assembly thoroughly after each use to maintain optimal shaving performance.

1 Press the on/off button to turn razor ON.



2 Rinse Razor Head Assembly under hot tap water by letting the water run in and around all the openings for at least 30 seconds.



3 You can also immerse the Razor Head Assembly in hot water for at least 30 seconds.

Make sure the razor is ON to thoroughly remove any residue.

BE CAREFUL TO TEST WATER FIRST SO AS NOT TO BURN OR SCALD HANDS.

4 Turn razor OFF and shake off excess water.

5 You can store the razor in the refill & charge stand.

6 Put the Protective Razor Head Cap on razor to protect heads.

Note: If lotion build-up has occurred, remove Razor Head Assembly and soak for a few minutes

under hot water or a degreasing liquid (e.g. alcohol). Be sure to thoroughly rinse Razor Head Assembly under tap water before using razor.

Razor Head Assembly: Once A Month

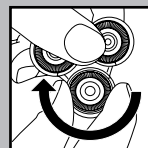
Do not mix up the cutters and combs as the shaving performance may be adversely affected for several weeks before optimal shaving performance is restored.

1 Turn razor OFF.



2 Remove Razor Head Assembly from razor by pulling Razor Head Assembly straight up from razor.

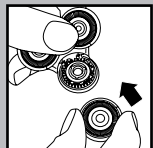
3 Using your thumb and forefinger turn the razor head clockwise and lift the comb off of Razor Head Assembly.



4 Remove and clean one set of cutters and combs at a time.

Do not clean more than one cutter and comb at a time, since they are all matching sets. If you accidentally interchange the cutters and combs, it could take several weeks before optimal shaving performance is restored.

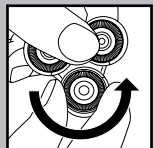
5 Separate the cutter from the comb and clean with a small brush or rinse clean under hot water.



- 6** Replace the cutter back onto the Razor Head Assembly making sure the blades are pointing upwards.

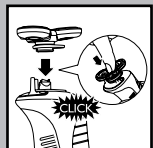
- 7** Place the razor head comb back onto the Razor Head Assembly.

Be sure to replace the comb back into the original razor head before cleaning the next set.



- 8** Turn the razor head counterclockwise until it locks into place.

- 9** Repeat the process for the other two sets of cutters and combs.



- 10** Replace Razor Head Assembly back on razor and push down (you will hear a click).

The Razor Head Assembly will only fit correctly in one position on razor. Make sure to align the 2 shaving lotion dispensing holes on the Razor Head Assembly with the 2 shaving lotion tubes on the razor.

Trimmer:After Each Use

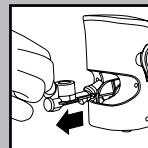
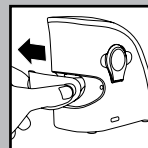
- 1** Press the on/off button to turn razor ON.
- 2** Rinse the trimmer under hot tap water for at least 30 seconds.
- 3** Turn razor OFF and shake off excess water.

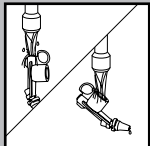
- 4** Lubricate trimmer teeth twice a year with one drop of mineral oil.
- 5** Remove the trimmer and put it back into the trimmer storage compartment on the refill & charge stand.
- 6** Replace Razor Head Assembly back on the razor until it clicks into position.

Pump Unit:

- ▶ It is recommended that you clean the refill & charge stand pump unit each time you replace the shaving conditioner bottle to remove any residual shaving conditioner lotion. This helps to prevent blockage of the pump unit.

- 1** Unplug refill & charge stand. Remove the shaving conditioner bottle and razor from stand.
- 2** Remove the panel on the back of the refill & charge stand.
- 3** Gently pull the pump unit out from the stand.





- 4** Thoroughly rinse the pump unit under hot tap water for at least 30 seconds.

Make sure all residual shaving conditioner lotion is removed.

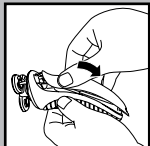
- 5** Carefully place the pump unit back into the refill & charge stand and reattach the back panel.

- 6** Put the shaving conditioner bottle and razor back into the refill & charge stand (see 'Preparing Refill & Charge Stand For Use').

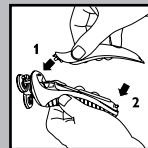
Replacing Cartridges and Shaving Conditioner Refill Bottle

- ▶ For hygienic reasons, it is recommended to replace the shaving conditioner cartridge each time you start a new shaving conditioner bottle.
- ▶ A new empty cartridge is supplied with each new NIVEA FOR MEN Shaving Conditioner bottle (Model HS800).

Shaving Conditioner Cartridge



- 1** Remove the shaving conditioner cartridge from the back of razor.

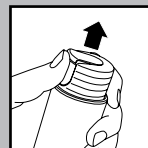


- 2** Insert the hinge at the top of the new shaving conditioner cartridge into the slot in the rim of the razor back (1). Then press the bottom part of the cartridge with your thumb (2) to attach the cartridge to the razor. You will hear a 'click'.

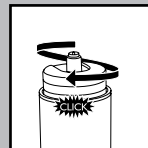
- 3** The shaving conditioner cartridge is now ready to be filled (see 'Charging and Refilling the Razor').

NIVEA FOR MEN Shaving Conditioner Bottle

- ▶ Only use NIVEA FOR MEN Shaving Conditioner (Model HS800) with the refill & charge stand. Any other lotion may cause damage to your razor.

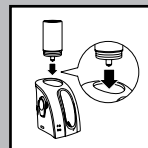


- 1** Remove the tab of the NIVEA FOR MEN shaving conditioner bottle.



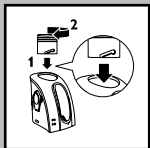
- 2** Turn the cap on the shaving conditioner bottle clockwise.

The cap moves down and the shaving conditioner nozzle appears.



- 3** Turn the cap of the refill & charge stand counterclockwise to remove cap.

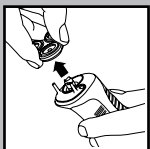
- 4** Place the shaving conditioner bottle in the docking hole of the refill & charge stand with the nozzle pointing down.



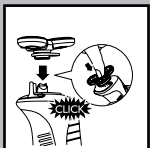
- 5** Replace the cap on the top of the bottle docking station (1) and turn clockwise to secure the cap (2).

Replacing Razor Head Assembly

- ▶ Replace the entire Razor Head Assembly once a year for optimal shaving results.
- ▶ Replace damaged or worn Razor Head Assembly with model HS85 Philips Norelco razor heads only.



- 1** Remove the Razor Head Assembly from the razor by pulling the Razor Head Assembly straight up away from the razor.



- 2** Place new Razor Head Assembly back on the razor and push down (you will hear a click).

The Razor Head Assembly will only fit correctly in one position on razor. Make sure to align the 2 shaving lotion dispensing holes on the Razor Head Assembly with the 2 shaving lotion tubes on the razor.

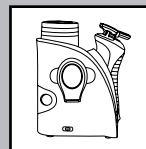
This razor and refill & charge stand have no other user-serviceable parts. For assistance call 1-800-243-3050.

Maintenance

- ▶ Always remove razor from the refill & charge stand before cleaning appliance.
- ▶ Unplug the refill & charge stand. The stand may be wiped clean using a damp cloth.
- ▶ Water from the tap should be on a warm setting to clean any washable parts.

Note: DO NOT place or clean any parts of the refill & charge stand in a dishwasher.

Storage



- ▶ The razor can be placed in the refill & charge stand for safe storage. If storing razor in refill & charge stand, remove the plug from outlet as soon as the razor is fully charged and refilled with shaving conditioner.
- ▶ If appliance will not be used for an extended period of time, it is recommended that you thoroughly clean the pump unit, Razor Head Assembly and that the shaving conditioner bottle be removed before storing.
- ▶ The razor can be stored in the pouch supplied. The pouch will add extra protection during travel.
- ▶ Be sure razor is turned off. Remove cord from outlet and refill & charge stand before storing in a safe, dry location where it will not be crushed, banged, or subject to damage.
- ▶ Do not wrap cord around razor or refill & charge stand when storing.
- ▶ Store cord in a safe location where it will not be cut or damaged.



- ▶ Do not keep refill & charge stand permanently plugged into outlet.
- ▶ Do not place or store refill & charge stand where it can fall or be pulled into a tub or sink, water or other liquid while plugged in.
- ▶ During storage, always put the Protective Razor Head Cap on razor to protect heads.

Assistance

- ▶ For assistance, call toll free:

1-800-243-3050

or visit our website:

www.philips.com/norelco

- ▶ Information is available 24 hours a day, 7 days a week.

Accessories

- ▶ **Replacement Razor Head Assembly Model HS85** – For maximum razor performance, replace your Philips Norelco Razor Head Assembly once a year. Razor Head Assembly contains 3 cutters & 3 combs.
- ▶ **NIVEA FOR MEN Shaving Conditioner and Replacement Razor Cartridge HS800** – NIVEA FOR MEN Shaving Conditioner (2.5 fl. oz./75 ml.) and Replacement Razor Cartridge.
- ▶ Philips Norelco Razor Accessories may be purchased at a store near you or on our website www.philips.com/norelco

FULL TWO YEAR WARRANTY

Philips Electronics North America Corporation warrants each new Philips Norelco Product, Model 8060X (except cutters, combs and conditioner cartridge) against defects in materials or workmanship for a period of two years from the date of purchase, and agrees to repair or replace any defective product without charge.

IMPORTANT: This warranty does not cover damage resulting from accident, misuse or abuse, lack of reasonable care, the affixing of any attachment not provided with the product or loss of parts or subjecting the product to any but the specified voltage.* Use of unauthorized replacement parts will void this warranty.

PHILIPS ELECTRONICS NORTH AMERICA CORPORATION WILL NOT PAY FOR WARRANTY SERVICE PERFORMED BY A NON-AUTHORIZED REPAIR SERVICE AND WILL NOT REIMBURSE THE CONSUMER FOR DAMAGE RESULTING FROM WARRANTY SERVICE PERFORMED BY A NON-AUTHORIZED REPAIR SERVICE. NO RESPONSIBILITY IS ASSUMED FOR ANY SPECIAL, INCIDENTAL OR CONSEQUENTIAL DAMAGES.

In order to obtain warranty service, simply go to www.philips.com/norelco or call 1-800-243-3050 for assistance. It is suggested that for your protection you return shipments of product by insured mail, insurance prepaid. Damage occurring during shipment is not covered by this warranty.

NOTE: No other warranty, written or oral, is authorized by Philips Electronics North America Corporation.

This warranty gives you specific legal rights, and you may also have other rights which vary from state to state. Some states do not allow the exclusion or limitation of incidental or consequential damages, so the above exclusion and limitations may not apply to you.

* Read enclosed instructions carefully.


Manufactured for:

Philips Consumer Lifestyle

A Division of Philips Electronics North America Corporation
1600 Summer Street – 5th Floor; Stamford, CT 06905-5125



This symbol on the product's nameplate means it is listed by Underwriters' Laboratories, Inc.

Norelco, Tripleheader, Lift and Cut, Glide Rings and  are Registered Trademarks of Philips Electronics North America Corporation.



is a Trademark of Philips Electronics North America Corporation.

PHILIPS is a Registered Trademark of Koninklijke Philips Electronics N.V.

NIVEA FOR MEN is a Registered Trademark of Beiersdorf AG.
Beiersdorf North America Inc.
187 Danbury Road
Wilton, CT 06897
www.nivea.com